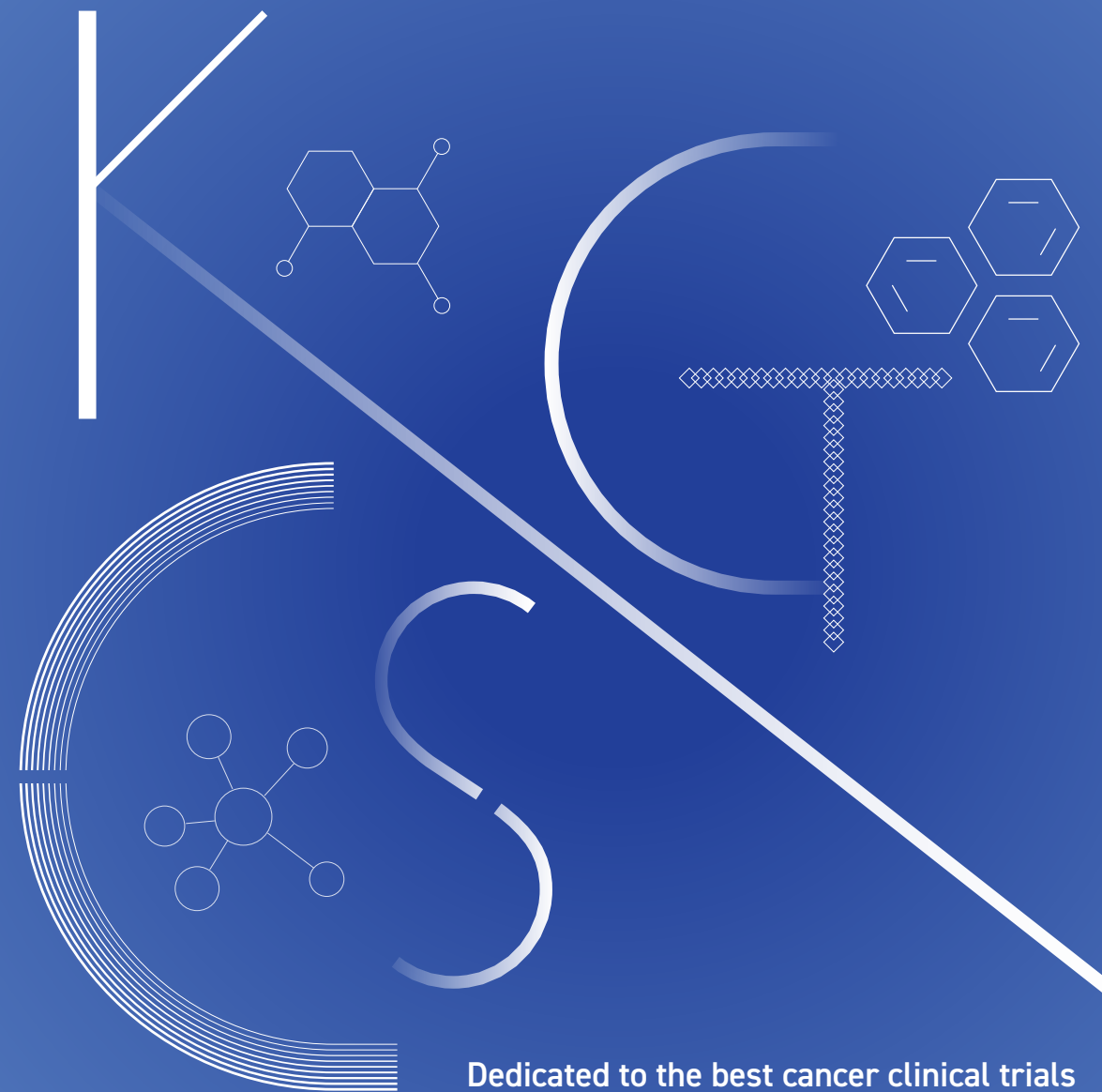


KCSG: Paving the Way to a Cancer-free World



Contact Info

E-mail [Office] kcsq@kcsq.org [Data Canter] datacenter@kcsq.org

Website www.kcsq.org

Address #1501, 49, Ahasan-ro, Seongdong-gu, Seoul 04790, Rep. of KOREA

Dedicated to the best cancer clinical trials

KCSG

Korean Cancer Study Group (KCSG) is the nation's leader in multi-institutional clinical trials for cancer treatment

Since our establishment in 1998, KCSG has been dedicated to the advancement of clinical and translational cancer research through multi-institutional clinical trials in Korea.



2023 KEY FIGURES



850+

Individual Members
dedicated Cancer
Research

270+

Clinical Research
since 1998

140+

Publications

120+

Cancer Centers &
Hospitals in Korea

51,000+

Enrolled
Patients

6+

Alliances with
Global Study Groups

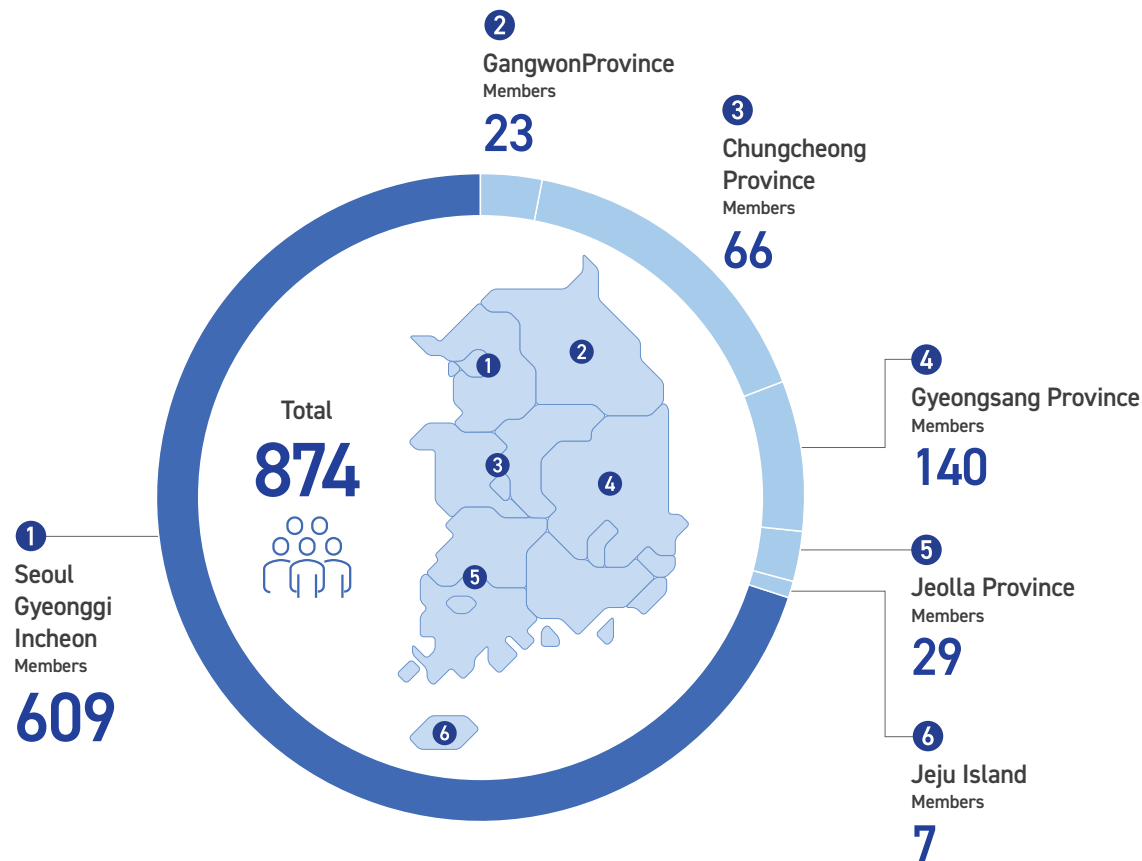
RESEARCH FIELD

 Hepatobiliary & Pancreatic Cancer	 Colorectal Cancer	 Head & Neck and Esophageal Cancer
 Lymphoma	 Gynecologic Cancer	 Genitourinary Cancer
 Palliative Care	 Stomach Cancer	 Breast Cancer
 Lung Cancer	 Rare Cancer	

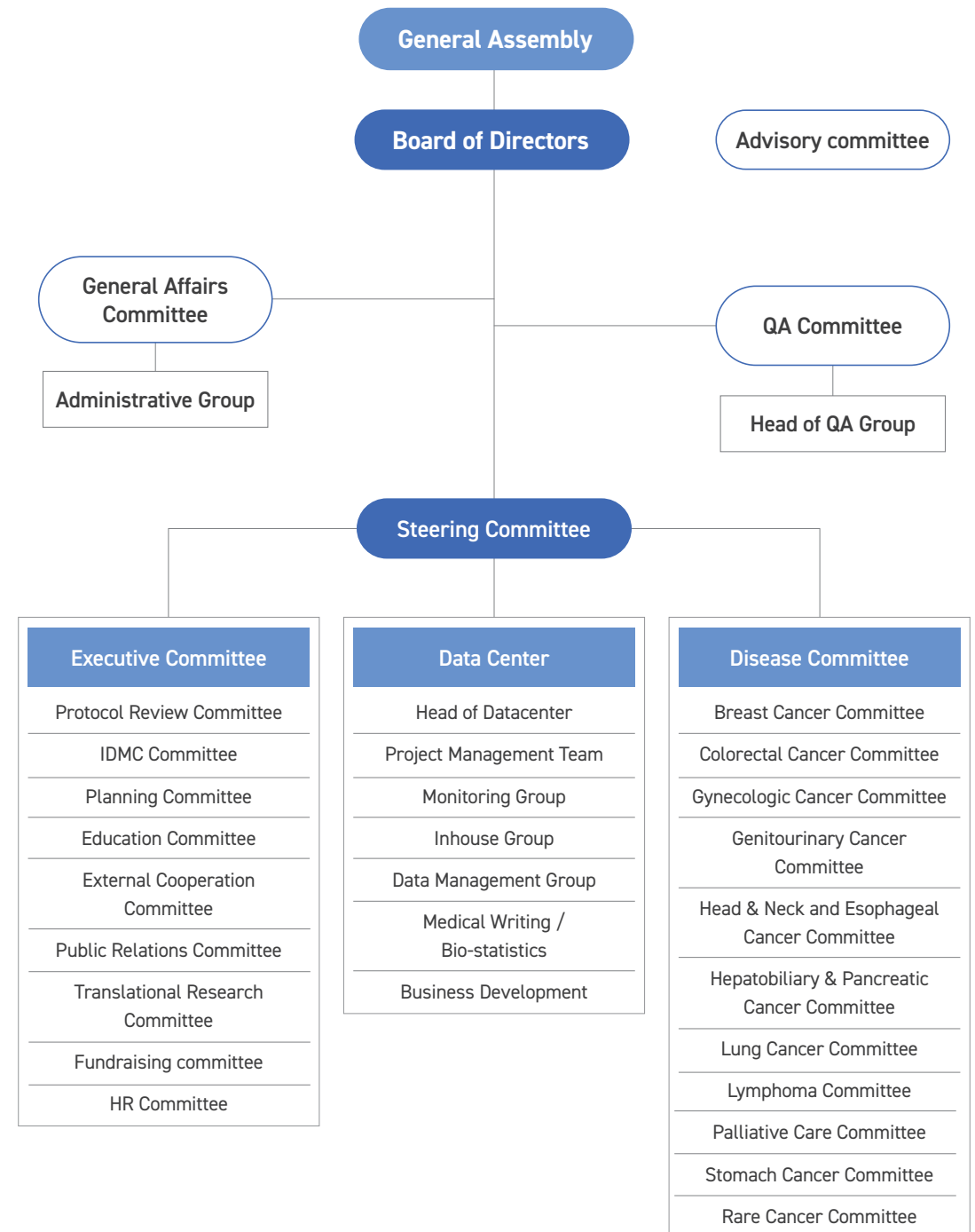
MEMEBERSHIP

 <p>850+ members from 120 hospitals and institutions in Korea</p>	 <p>Clinical oncologists across all oncology disciplines</p>
 <p>Highly interconnected national network for efficient global clinical trials</p>	 <p>Well-trained healthcare professionals including CRAs, CRCs, CRPs, and members of CRO</p>

KOREAN CANCER STUDY GROUP Member



ORGANIZATION



OUR HISTORY

1998

- Established KCSG, consisting of six committees: Stomach Cancer, Colorectal Cancer, Lung Cancer, Head & Neck and Esophageal Cancer, Breast Cancer, and Lymphoma

2002

- Founded Hepatobiliary & Pancreatic Cancer Committee

2003

- Hosted the 1st Clinical Trial Workshop

2004

- Founded Palliative Care Committee

2005

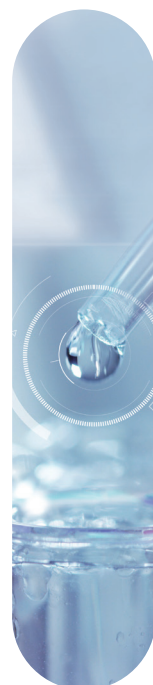
- Set up Institutional Review Board (IRB)

2006

- Research Support Department renamed to Data Center

2007

- [KCSG LU02-01] research published: J Clin Oncol. 2007;25:5233-9



2009

- Founded GU/GY cancer committee and rare cancer committee
- Founded Protocol Review Committee (PRC)
- Implemented KCSG-ECOG-ACRIN (Eastern Cooperative Oncology Group) research cooperation

2010

- [KCSG HB06-02] research published: Cancer Chemother Pharmacol, 2010 Mar;65(4):641-7

2011

- [KCSG ST06-04] research published: Invest New Drugs, 2011;29:366-73
- Joined ECOG as special participant member

2013

- [KCSB BR07-02] research published: J Clin Oncol. 2013;31:1732-9

2014

- [KCSG LY04-03] research published: Oncologist, 2014;19:1129-30
- Entered partnership with TRIO(Translational Research in Oncology) for joint research, received TRIO grant
- Started exchange program with AGITG (Australasian Gastro-Intestinal Trials Group)

2015

- [KCSG LU05-04] research published J Clin Oncol. 2015 Aug 20;33(24):2660-6
- [KCSG GU10-17] research published Br J Cancer. 2015;112:260-5
- [KCSG HN12-02] research published Clin Cancer Res. 2015 Feb;21(3):544-52
- Participated in collaborative research with EORTC (European Organization for Research and Treatment for Cancer)
- Participated in research of CTCG (Canadian Cancer Trials Group)

2016

- Endorsed by Ministry of Food and Drug Safety

2017

- [KCSG LU13-08] research published J Clin Oncol. 2017 Aug 10;35(23):2613-2618
- Became a member of Breast International Group (BIG)
- Established QA Committee and Translational Research Committee

2018

- [KCSG PC13-09] research published Br J Cancer. 2018 May;118(9):116901175
- Hosted KCSG-KoNECT-ECRIN joint workshop



2019

- Consolidated IRB Committee into PRC Committee
- Hosted Clinical Trial Networking Night at ASCO 2019 (Co-host: KoNECT)

2020

- [KCSG LU15-09] research published J Clin Oncol. 2020 Feb 10;38(5):488-495
- Opened online training program for cancer clinical trial professionals

2021

- Established Bio-statistics Team and Medical Writing Team












2022

- Published 'Recommendations for the Use of Next-Generation Sequencing and the Molecular Tumor Board for Patients with Advanced Cancer'

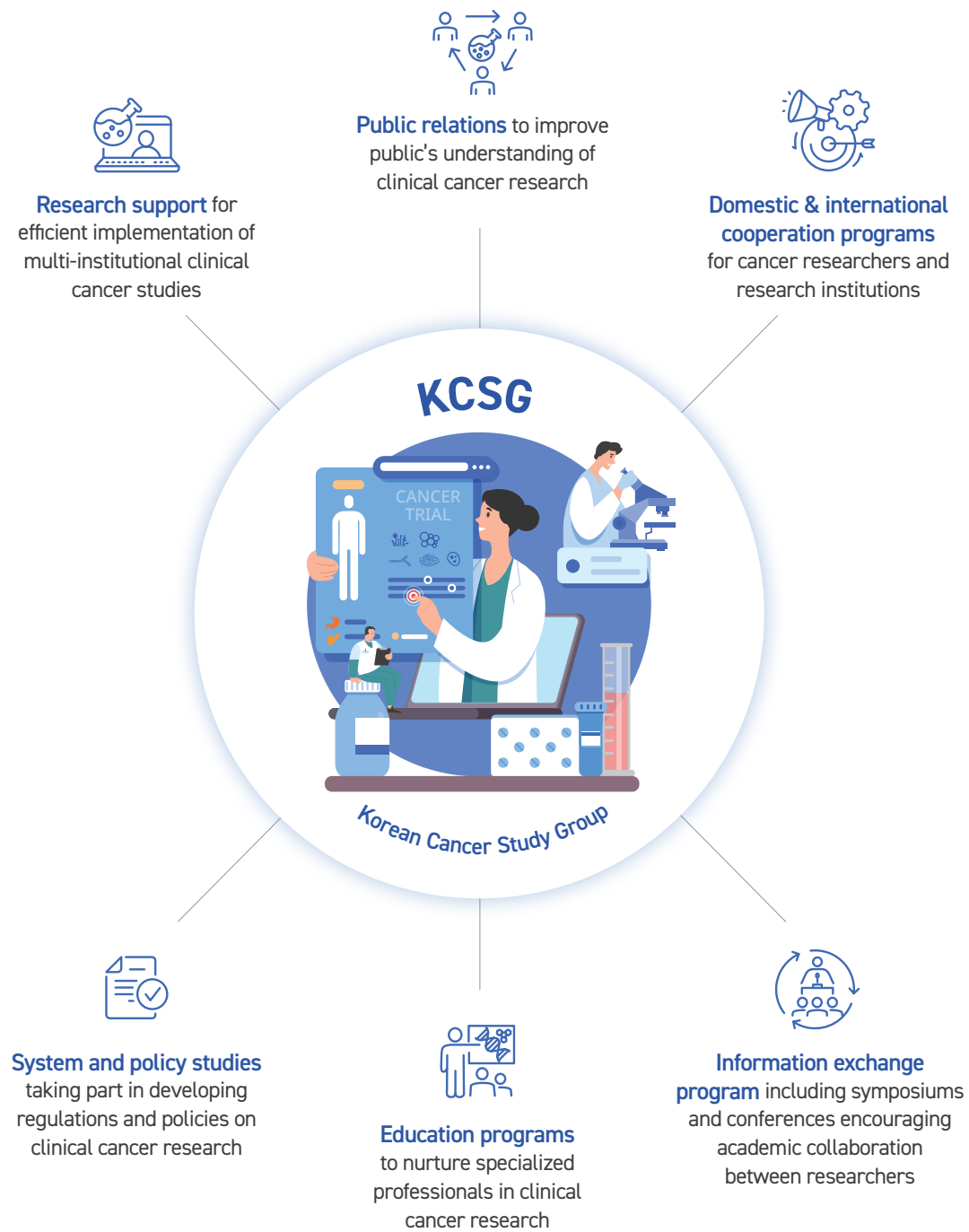
2023

- [KCSG HB19-14] research published Lancet Gastroenterol Hepatol. 2023 Jan;8(1):56-65.
- [KCSG HN15-16] research published J Clin Oncol. 2023 Sep 12;JCO202786.

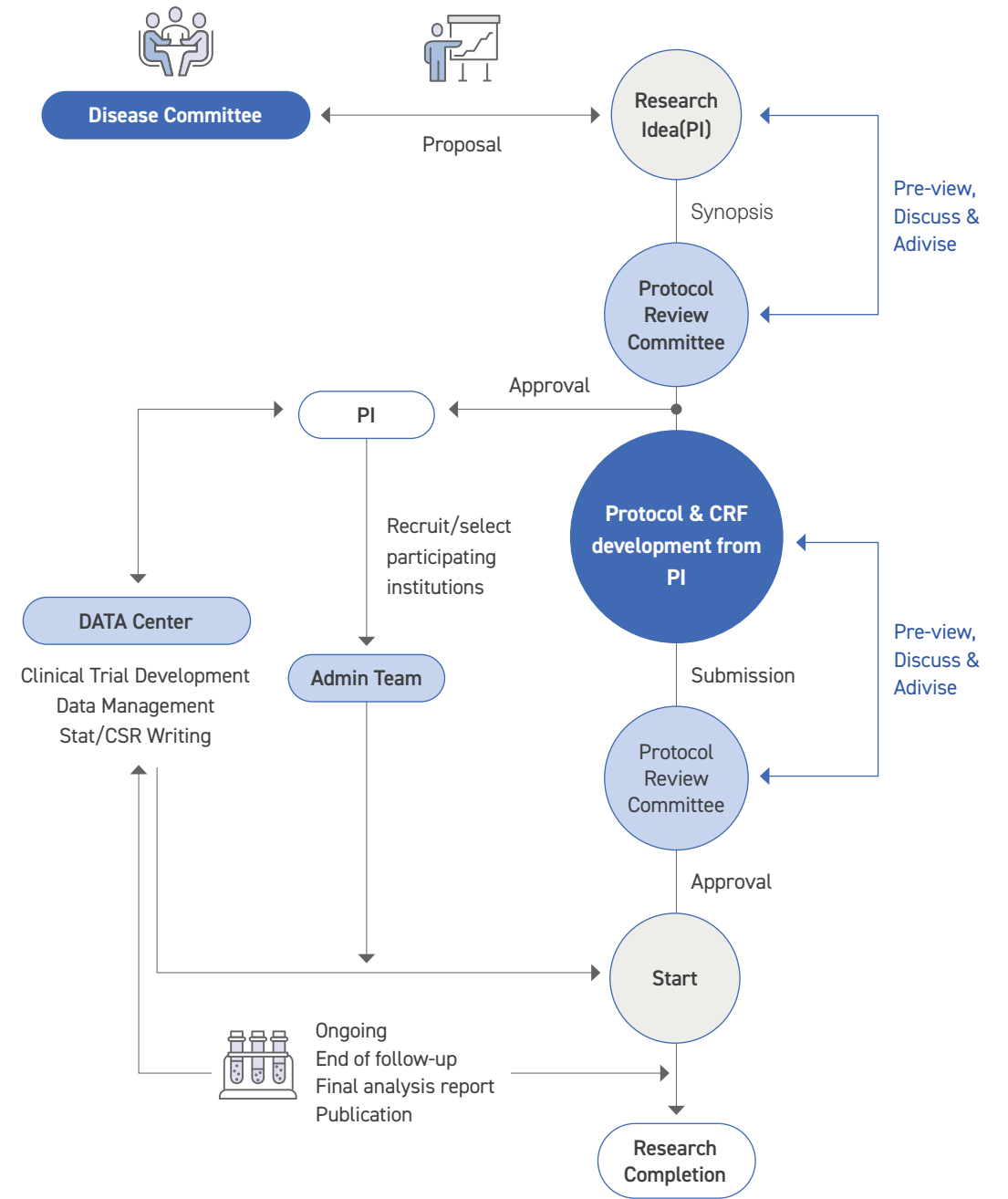
LANDMARK TRIALS

 <p>Hepatobiliary & Pancreatic Cancer</p>	<p>KCSG HB19-14 / Lancet Gastroenterol Hepatol. 2023 Jan;8(1):56-65.</p> <p>Trastuzumab plus FOLFOX for HER2-positive biliary tract cancer refractory to gemcitabine and cisplatin: a multi-institutional phase 2 trial of the Korean Cancer Study Group (KCSG-HB19-14)</p>	 <p>Palliative Care</p>	<p>KCSG PC21-20 / Cancer Res Treat. 2023 Apr;55(2):442-451.</p> <p>Status of Using Complementary and Alternative Medicine among Patients with Cancer in Korea: an Online Survey of Online Cancer Support Groups (KCSG PC21-20)</p>
 <p>Colorectal Cancer</p>	<p>KCSG C009-07 / J Clin Oncol. 2022 Jun 30;JC02102962.</p> <p>Oxaliplatin (3 months v 6 months) With 6 Months of Fluoropyrimidine as Adjuvant Therapy in Patients With Stage II/III Colon Cancer: KCSG C009-07</p>	 <p>Stomach Cancer</p>	<p>KCSG ST13-10 / Cancer Res Treat. 2023 Oct;55(4):1250-1260.</p> <p>A Phase 3 Randomized Clinical Trial to Compare Efficacy and Safety between Combination Therapy and Monotherapy in Elderly Patients with Advanced Gastric Cancer (KCSG ST13-10)</p>
 <p>Head & Neck and Esophageal Cancer</p>	<p>KCSG HN15-16 / J Clin Oncol. JC02202786. (Published Online Sep 12, 2023)</p> <p>Personalized Biomarker-Based Umbrella Trial for Patients With Recurrent or Metastatic Head and Neck Squamous Cell Carcinoma: KCSG HN 15-16 TRIUMPH Trial</p>	 <p>Breast Cancer</p>	<p>KCSG BR18-23 / JAMA Oncol. 2022 Jul 7.</p> <p>Response Rate and Safety of a Neoadjuvant Pertuzumab, Atezolizumab, Docetaxel, and Trastuzumab Regimen for Patients With ERBB2-Positive Stage II/III Breast Cancer: The Neo-PATH Phase 2 Nonrandomized Clinical Trial</p>
 <p>Lymphoma</p>	<p>KCSG LY20-06 / Korean J Intern Med. (Published Online Jun 26, 2023)</p> <p>Treatment pattern of chronic lymphocytic leukemia/small lymphocytic lymphoma in Korea: a multicenter retrospective study (KCSG LY20-06)</p>	 <p>Lung Cancer</p>	<p>KCSG LU17-21 / J Thorac Oncol. 2023 Feb;18(2):223-231.</p> <p>A Phase 2 Study of Palbociclib for Recurrent or Refractory Advanced Thymic Epithelial Tumors (KCSG LU17-21)</p>
 <p>Genitourinary Cancer</p>	<p>KCSG GU18-18 / ESMO Open. 2023 Aug;8(4):101588.</p> <p>Phase II study of a trastuzumab biosimilar in combination with paclitaxel for HER2-positive recurrent or metastatic urothelial carcinoma: KCSG GU18-18</p>	 <p>Others</p>	<p>KCSG RC20-09 / Cancer Med. (Published Online Jun 1, 2023)</p> <p>Treatment outcomes of advanced/metastatic extramammary Paget's disease in Korean patients: KCSG-RC20-06.</p>
		 <p>Others</p>	<p>Cancer Res Treat. 2022 Jan;54(1):1-9</p> <p>Recommendations for the Use of Next-Generation Sequencing and the Molecular Tumor Board for Patients with Advanced Cancer: A Report from KSMO and KCSG Precision Medicine Networking Group</p>

WHAT WE DO



KCSG'S CLINICAL TRIAL PROCEDURE



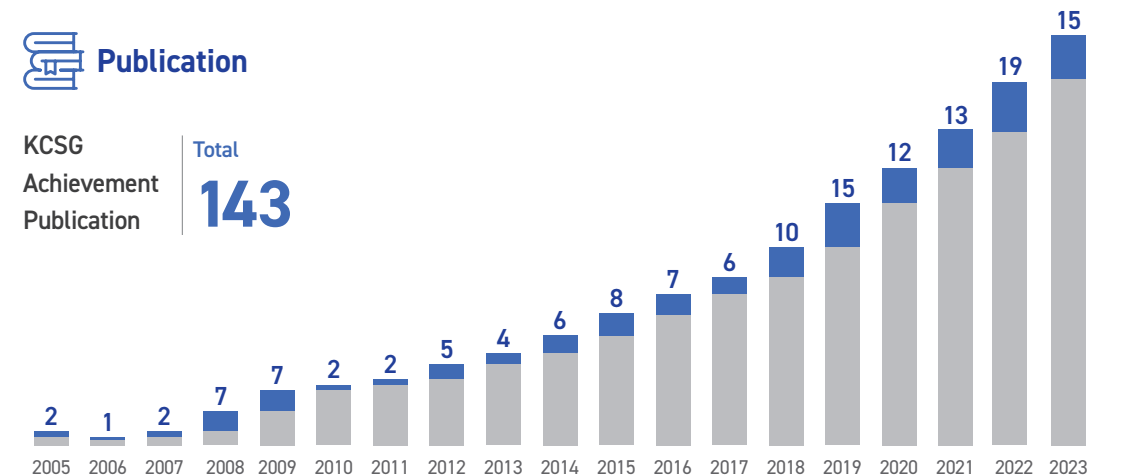
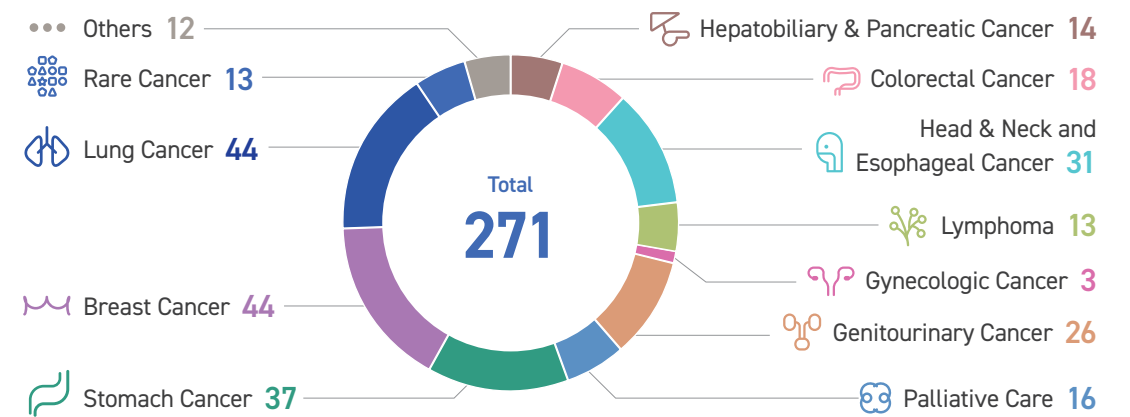
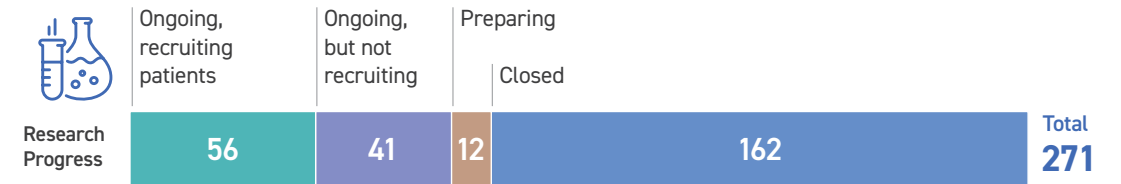
DATA CENTER

Data Center Is a clinical operation organization in KCSG. We provide high-quality clinical operational services to study sponsors, complying with ICH guidelines, Korean GCP and relevant regulations.



RESEARCH ACCOMPLISHMENTS

25 years of paving the way to a cancer-free world | **271** clinical research since 1998



ONGOING TRIALS

Disease Committee	Phase	Study No.	Study Title
Breast Cancer	Ib&II	KCSG BR18-10	Phase IB & II study of Ribociclib with Trastuzumab plus Letrozole in Postmenopausal HR+, HER2+ Advanced Breast Cancer Patients
	II	KCSG BR18-13	Phase II Study of Trastuzumab plus Gedatolisib in Patients with HER-2 Positive Metastatic Breast Cancer Who Progressed after 2 or more HER-2 directed Chemotherapy
	II	KCSG BR19-03	Randomized, Open label, Multi-Center, Phase II Trial of Eribulin with or without SB3 (Trastuzumab-biosimilar) in Patients With HER2-overexpressed Recurrent or Stage IV Breast Cancer Who Have Received at Least 2 Prior HER2-directed Regimens
	II	KCSG BR19-13	Single-arm Phase II Study of Palbociclib Plus Endocrine Therapy in Patients With High Risk ER-positive/HER2-negative T1-2N0-1 Early Breast Cancer Incorporating GenesWell™ BCT
	II	KCSG BR19-21	Phase II Study of Abemaciclib plus Trastuzumab biosimilar(Herzuma®) ± Fulvestrant in Patients with HER2 Positive Metastatic Breast Cancer in Brain who Progressed after HER2 directed Chemotherapy
	II	KCSG BR20-16	Phase II trial of pembrolizumab and paclitaxel in hormone receptor-positive, hyperMUTATED metastatic breast cancer Identified by whole exome sequencing ('MUTATION2')
	II	KCSG BR21-08	Randomized open-label multicenter phase II trial comparing first-line Olaparib versus CDK4/6i plus endocrine therapy in patients with gBRCAmut-associated HR(+)/HER2(-) recurrent unresectable and/or metastatic breast cancer (OPERA trial)
	II	KCSG BR21-09	Randomized Phase II Study of Talazoparib Versus Talazoparib Plus Atezolizumab After Palbociclib Combination Endocrine Therapy for Patients With Premenopausal HR+/HER2- Metastatic Breast Cancer Harboring HRD Scar
	II	KCSG BR21-10	A randomized phase II clinical trial of talazoparib maintenance therapy in triple-negative breast cancer patients who showed platinum-sensitivity on first- or second-line platinum-based chemotherapy
	OS	KCSG BR21-15	Nationwide real-world practice pattern and clinical data of palbociclib in Hormone-receptor positive, HER2-negative metastatic breast cancer patients
	II	KCSG BR22-20	Comparison of clinical efficacy between letrozole + ribociclib vs. Fulvestrant + letrozole + ribociclib in Hormone receptor positive, HER2 negative metastatic breast cancer – a randomized, phase 2 study
	NA	KCSG BR22-25	Efficacy and safety of Neratinib (Nerlynx®) in HER2-positive metastatic breast cancer previously treated with 2 or more HER2-directed therapy from Expanded Access Program Cohort study
	II	KCSG BR23-18	The exploratory randomized phase II study of trastuzumab deruxtecan versus endocrine therapy of physician's choice in low-HER2 expressing hormone receptor-positive advanced breast cancer patients
	Colorectal Cancer	II	KCSG CO19-18

Disease Committee	Phase	Study No.	Study Title
Colorectal Cancer	Ib&II	KCSG CO21-04	A phase Ib/II, open label, single arm study to assess efficacy and safety of alpelisib and capecitabine in patients with PIK3CA mutant metastatic colorectal cancer who failed two prior standard chemotherapies
	OS	KCSG CO22-12	Platform Study of Circulating Tumor DNA Directed Adjuvant Chemotherapy in Colon Cancer (CLAUDIA Colon Cancer) Part 1: Prospective Observational Study of ctDNA Monitoring During Adjuvant Chemotherapy in Stage II-III Colon Cancer Part 2: A Randomized Controlled Phase III Trial of Treatment Intensification in Stage II-III Colon Cancer Patients with Positive MRD during Adjuvant Chemotherapy
Genitourinary Cancer	II	KCSG GU20-03	A Multicenter Prospective Phase II Study of modified FOLFIRINOX for 1st line treatment for advanced urachus cancer (ULTIMA)
	NA	KCSG GU20-07	Multicenter retrospective evaluation of adherence to treatment guidelines of germ cell tumor and implication of treatment outcome
	II	KCSG GU21-02	CAbozanTinib As Subsequent therapy to an Immune checkpoint inhibitor-based therapy in renal cell carcinoma, phase 2, multicenter, open-label, interventional study (AT ASIA)
	II	KCSG GU21-14	A Prospective Phase II Trial of Pembrolizumab Plus Lenvatinib in Advanced Adrenal Cortical Carcinoma After Failure of Platinum- and Mitotane-Based Chemotherapy (ACCOMPLISH)
	III	KCSG GU22-24	A randomized phase 3 trial of adding docetaxel to ADT plus ARTA in patients with metastatic hormone-sensitive prostate cancer
	NA	KCSG GU22-13	Multicenter retrospective study of Real-world feasibility and biomarker exploration of 1st-line Nivolumab and Ipilimumab in patients with advanced renal cell carcinoma (RCC) : RENOIR study
	OS	KCSG GU22-14	A retrospective study on the efficacy and safety of immunotherapeutics in HLRCC-associated RCC
	II	KCSG GU23-14	A phase 2, multi-center, open-label study to evaluate the safety, tolerability and efficacy of combination regimen of GI-101A and SL-T10 in patients with metastatic castration-resistant prostate cancer (mCRPC)
	Gynecologic Cancer	Ib&II	KCSG GY20-10
Head & Neck and Esophageal Cancer	II	KCSG HN18-07	A phase II trial of neoadjuvant docetaxel/5-FU/cisplatin in combination with prophylactic Pegteograstim in unresectable, locally advanced nasal cavity/paranasal squamous cell carcinoma (SCC)
	II	KCSG HN19-09	A randomized phase II study of consolidation pembrolizumab therapy after chemoradiotherapy in locally advanced nasopharyngeal carcinoma
	NA	KCSG HNE21-25	A Registry study of Larotrectinib chemotherapy in patients with NTRK fusion positive recurrent salivary gland cancer as second-line treatment
	II	KCSG HNE21-27	A phase II study of axitinib and chemotherapy in patients with recurred or metastatic salivary gland cancer
	II	KCSG HNE23-06	An open label, single arm, multicenter phase II study of zanidatamab in patients with HER2 positive salivary gland carcinoma
Hepatobiliary & Pancreatic Cancer	III	KCSG HB20-14	A Randomized, Multi-center Phase III Trial of Adjuvant Chemotherapy with Gemcitabine and Capecitabine Compared to Capecitabine Alone in Curatively Resected Biliary Tract Cancer

Disease Committee	Phase	Study No.	Study Title
Hepatobiliary & Pancreatic Cancer	II	KCSG HB23-04	Phase II trial of regorafenib in patients with unresectable hepatocellular carcinoma after progression on first line atezolizumab plus bevacizumab
	Ib&II	KCSG HB23-05	First-line trastuzumab, gemcitabine, cisplatin and nivolumab in advanced HER2-positive biliary tract cancer: a multicenter, openlabel, single-arm phase Ib/II trial (HERBOT)
	OS	KCSG HB23-01	A long-term follow-up study of FOLFIRINOX regimen as adjuvant therapy in pancreatic cancer patients after curative surgery: multi-center, prospective
Lung Cancer	II	KCSG LU21-16	Lazertinib for patients with NSCLC harboring uncommon EGFR mutations: A single-arm, phase II multi-center trial
	II	KCSG LU21-17	Phase II Trial of Lazertinib and Pemetrexed/Carboplatin Combination in Patients with Epidermal Growth Factor Receptor Sensitizing Mutation Positive, Metastatic Non-Small Cell Lung Cancer with Asymptomatic or Mild Symptomatic Brain Metastases After Failure of Osimertinib
	NA	KCSG LU22-01	Lazertinib real-world observational study of in pre-treated EGFR T790M mutant with advanced non-small cell lung cancer (Lazer Sword)
	OS	KCSG LU22-18	The efficacy of durvalumab maintenance therapy after definitive CCRT in locally advanced non-small cell lung cancer according to biomarker status; Real-world data in Korea
Lymphoma	NA	KCSG LY17-08	Clinical outcomes of R-miniCHOP in elderly patients older than 80 years with diffuse large B cell lymphoma: registry
	II	KCSG LY22-07	Phase II study of tislelizumab plus pemetrexed in patients with relapsed or refractory primary diffuse large B-cell lymphoma (DLBCL) of the central nervous system (CNS)
	OS	KCSG LY22-15	Clinico-genetic features of Korean patients with Erdheim-Chester disease
	NA	KCSG LY18-01	Clinical outcomes and prognostic factors in patients with advanced-stage extranodal NK/T-cell lymphoma: Korean multicenter retrospective study
Palliative Care	II	KCSG PC20-12	Efficacy and safety of transdermal buprenorphine patch in cancer patients who are physically dependent on opioids
	III	KCSG PC22-11	COmparisoN of prophylactic effects for Chemotherapy Induced neutropenia between Same-day versus next-day administration of pegteograstim (Neurapeg®) in patients treated with chemotherapy regimen composed of day 1 intensive myelosuppressive agent: A randomized phase III clinical trial (CONCISE trial)
Rare Cancer	II	KCSG RC22-26	Randomized Phase 2 study of Adjuvant Chemotherapy vs Observation After Complete Resection of Stage III Soft Tissue Sarcomas
Stomach Cancer	III	KCSG ST14-05	Phase III Study of Adjuvant Capecitabine vs Observation Alone in Curatively Resected Stage IB (by AJCC 6th Edition) Gastric Cancer
	III	KCSG ST15-08	A Phase 3, Open-Label, Randomized Study to Compare Adjuvant Chemotherapy of Docetaxel/Capecitabine/Oxaliplatin versus Capecitabine/Oxaliplatin in Advanced Gastric Cancer Patients at Stage IIIB and IV (M0) (Based on AJCC Ed. 6) who Received Radical Resection
	III	KCSG ST17-20	A multicenter, randomized, open label, phase III trial to evaluate the efficacy and safety of the combination of S-1, oxaliplatin and irinotecan in comparison to the combination of S-1 and cisplatin as first-line treatment in patients with metastatic or relapsed gastric cancer
	II	KCSG ST19-11	Phase 2 study of paclitaxel plus anti-EGFR as a second-line therapy for gastric and gastroesophageal junction adenocarcinomas

Disease Committee	Phase	Study No.	Study Title
Stomach Cancer	III	KCSG ST21-05	A randomized phase 3 clinical trial investigating optimal duration of oxaliplatin administration in postoperative XELOX (oxaliplatin + capecitabine) adjuvant chemotherapy for the patients with stage II/III gastric cancer
	II	KCSG ST21-12	Vactosertib in combination with durvalumab (MEDI4736) in patients with gastric cancer
	Ib&II	KCSG ST21-22	A phase 1b/2 study of tepotinib in combination with paclitaxel in patients with MET amplified or MET exon 14 altered advanced gastric and gastroesophageal junction carcinoma
	II	KCSG ST21-28	A phase II study of rivoceeranib in combination with paclitaxel in patients with advanced gastric and gastroesophageal junction carcinoma
	III	KCSG ST22-03	Randomized Controlled Trial of Intravenous Ferric Carboxymaltose for Iron-Deficiency Anemia in Patients With Advanced Gastric Cancer Receiving Palliative Chemotherapy
	OS	KCSG ST22-06	Comparison of 3rd line immune checkpoint inhibitors to irinotecan-based chemotherapy in patient with refractory to paclitaxel plus ramucirumab : multi-center, observational study
	Ib&II	KCSG ST22-22	Phase 1b/2 trial for CKD-702 in combination with irinotecan as a third-line therapy for gastric cancer with MET or EGFR protein overexpression
	Ib&II	KCSG ST23-03	A phase 1B/2 study of TRastuzumab, bEvAcizUmab with paclitaxel for HER2-positive gastric cancer in a second-line therapy (TREAASURE)
	OS	KCSG ST23-07	Multicenter cohort study to evaluate the real word efficacy and safety of chemotherapy plus nivolumab in advanced gastric cancer
	Ib&II	KCSG ST23-16	An open label, single-arm, multicenter phase Ib/II study to evaluate the safety and efficacy of T-DXd in combination with ramucirumab in patients with HER2 low gastric or gastroesophageal junction (GEJ) adenocarcinoma
Others	OS	KCSG AL21-13	Establishment of a geriatric assessment based multidisciplinary team approach on hospitalized older patients with advanced solid cancer: a multicenter randomized clinical trial
	OS	KCSG AL22-09	KOrean Precision Medicine Networking Group Study of MOlecular profiling guided therapy based on genomic alterations in advanced Solid tumors (KOSMOS) II
	II	KCSG AL22-16	A phase II clinical trial of Bevacizumab plus eRlotinib in patientS with advanced cancer having genetic alterations in Krebs cycle (BRISK)
	III	KCSG AL22-17	Prospective, multicenter, randomized phase 3 trial of high dose IV iron in combination of erythrocytosis stimulating agents in chemotherapy induced anemia with functional iron deficiency
	II	KCSG AL22-27	A phase II, open-label study of dabrafenib plus trametinib in patients with advanced solid tumor having BRAF V600E mutation or clinically actionable BRAF gene alterations
	II	KCSG AL23-02	A phase II study of ABN401 in advanced solid tumors with c-MET gene aberration (Part of KOrean Precision Medicine Networking Group Study of MOlecular profiling guided therapy based on genomic alterations in advanced Solid tumors [KOSMOS]-II)
	II	KCSG AL23-12	A phase 2 basket trial in which patients with advanced solid tumors carrying the KRAS G12C mUtation receive treatment with a combination of Sotorasib and panitumumab (KRAUS)
II	KCSG AL23-17	Genome-Based Assessment of Niraparib (ZEJULA®) Efficacy in Advanced Solid TumorS with Homologous Recombination Deficiency (GAUSS)	
NA	KCSG AL23-19	Development of systems for monitoring and management of immune-related adverse events in solid cancer patients treated with immuno-oncology	

GLOBAL COOPERATIVE ACTIVITIES

Cooperative Group **TRIO** Study No. **TRIO033**

Study Name A phase III, multicenter, randomized, open-label trial to evaluate efficacy and safety of ribociclib with endocrine therapy as an adjuvant treatment in patients with hormone receptor-positive, HER2-negative, early breast cancer (New Adjuvant Trial with Ribociclib [LEE011]: NATALEE).

Cooperative Group **TRIO** Study No. **TRIO039**

Study Name A Phase 1b Dose Escalation Study of BOLD-100 in Combination with FOLFOX Chemotherapy in Patients with Advanced Solid Tumours

Cooperative Group **TRIO** Study No. **TRIO041**

Study Name A phase III, multicenter, randomized, open-label trial to evaluate the efficacy and safety of regorafenib in combination with nivolumab versus transarterial chemoembolization (TACE) for the first-line treatment of intermediate-stage hepatocellular carcinoma with beyond up-to-7 criteria

Cooperative Group **TRIO** Study No. **TRIO045**

Study Name A phase III, randomized, open-label, multicenter study evaluating the efficacy and safety of adjuvant giredestrant compared with physician's choice of adjuvant endocrine monotherapy in patients with estrogen receptor-positive, HER2-negative early breast cancer

Cooperative Group **TRIO** Study No. **TRIO051**

Study Name A phase 1, first in human, dose-escalation study of TORL-2-307-MAB in participants with advanced cancer

Cooperative Group **TRIO** Study No. **TRIO052**

Study Name A phase 1, first in human, dose-escalation study of TORL-2-307-ADC in participants with advanced cancer

Cooperative Group **BIG** Study No. **DECRESCENDO**

Study Name De-escalation of adjuvant chemotherapy in HER2-positive, estrogen receptor-negative, node-negative early breast cancer subjects who achieved pathological complete response after neoadjuvant chemotherapy and dual HER2-blockade.

Cooperative Group **BIG**
Study No. **ALEXANDRA, Impasison030**

Study Name A phase III, multicentre, randomised, open-label study comparing atezolizumab (anti-PD-L1 antibody) in combination with adjuvant anthracycline/taxane-based chemotherapy vs. chemotherapy alone in patients with operable triple-negative breast cancer (TNBC)



PUBLICATION IN 2023

Hepatobiliary & Pancreatic Cancer Committee

KCSG HB19-14 • PMID: 36328033

Trastuzumab plus FOLFOX for HER2-positive biliary tract cancer refractory to gemcitabine and cisplatin: a multi-institutional phase 2 trial of the Korean Cancer Study Group (KCSG-HB19-14) *Lancet Gastroenterol Hepatol.* 2023 Jan;8(1):56-65.

Colorectal Cancer Committee

KCSG CO17-02 • PMID: 36376167

Preoperative Chemoradiotherapy With Capecitabine With or Without Temozolomide in Patients With Locally Advanced Rectal Cancer: A Prospective, Randomised Phase II Study Stratified by O6-Methylguanine DNA Methyltransferase Status: KCSG-CO17-02 *Clin Oncol (R Coll Radiol).* 2023 Feb;35(2):e143-e152

Head & Neck and Esophageal Cancer Committee

KCSG HN13-01 • PMID: 36672420

Comparison of Treatment Patterns and Clinical Outcomes by Gender in Locally Advanced Head and Neck Squamous Cell Carcinoma (KCSG HN13-01) *Cancers(Basel).* 2023 Jan 12;15(2):471.

KCSG HN15-16 • PMID: 37475136

A Phase II Trial of Nintedanib in Patients with Metastatic or Recurrent Head and Neck Squamous Cell Carcinoma (HNSCC): In-Depth Analysis of Nintedanib Arm from the KCSG HN 15-16 TRIUMPH Trial *Cancer Res Treat.* 2023 Jul 20. Online ahead of print.

KCSG HN15-16 • PMID: 37699162

Personalized Biomarker-Based Umbrella Trial for Patients With Recurrent or Metastatic Head and Neck Squamous Cell Carcinoma: KCSG HN 15-16 TRIUMPH Trial *J Clin Oncol.* 2023 Sep 12;JCO2202786. Online ahead of print.

Lymphoma Committee

KCSG LY20-06 • PMID: 37357604

Treatment pattern of chronic lymphocytic leukemia/small lymphocytic lymphoma in Korea: a multicenter retrospective study (KCSG LY20-06) *Korean J Intern Med.* 2023 Jun 26. Online ahead of print.

Genitourinary Cancer Committee

KCSG GU18-18 • PMID: 37385153

Phase II study of a trastuzumab biosimilar in combination with paclitaxel for HER2-positive recurrent or metastatic urothelial carcinoma: KCSG GU18-18 *ESMO Open.* 2023 Aug;8(4):101588.

Palliative Care Committee

KCSG PC21-20 • PMID: 36596728

Status of Using Complementary and Alternative Medicine among Patients with Cancer in Korea: an Online Survey of Online Cancer Support Groups (KCSG PC21-20) *Cancer Res Treat.* 2023 Apr;55(2):442-451.

Stomach Cancer Committee

KCSG ST13-10 • PMID: 37232070

A Phase 3 Randomized Clinical Trial to Compare Efficacy and Safety between Combination Therapy and Monotherapy in Elderly Patients with Advanced Gastric Cancer (KCSG ST13-10) *Cancer Res Treat.* 2023 Oct;55(4):1250-1260.

Breast Cancer Committee

KCSG BR07-03 • PMID: 36397238

A Phase II Trial of S-1 and Oxaliplatin in Patients with Metastatic Breast Cancer Previously Treated with Anthracycline and Taxane (KCSG-BR07-03) *Cancer Res Treat.* 2023 Apr;55(2):523-530.

KCSG BR16-09 • PMID: 35344650

Impacts of Subtype on Clinical Feature and Outcome of Male Breast Cancer: Multicenter Study in Korea (KCSG BR16-09) *Cancer Res Treat.* 2023 Jan;55(1):123-135.

KCSG BR18-14 • PMID: 37336919

Genomic analysis of plasma circulating tumor DNA in patients with heavily pretreated HER2 + metastatic breast cancer *Sci Rep.* 2023 Jun 19;13(1):9928.

KCSG BR18-16 • PMID: 37890351

Clinical activity of nivolumab in combination with eribulin in HER2-negative metastatic breast cancer: A phase IB/II study (KCSG BR18-16) *Eur J Cancer.* 2023 Dec;195:113386.

KCSG BR21-18 • PMID: 37279777

A Survey of Practice Patterns for Clinical Nodal Staging Prior to Neoadjuvant Chemotherapy in Breast Cancer *Oncologist.* 2023 Jun 5;oyad156. Online ahead of print.

Lung Cancer Committee

KCSG LU17-21 • PMID: 36307042

A Phase 2 Study of Palbociclib for Recurrent or Refractory Advanced Thymic Epithelial Tumors (KCSG LU17-21) *J Thorac Oncol.* 2023 Feb;18(2):223-231.

KCSG LU19-04 • PMID: 37861993

Phase III, Randomized Study of Atezolizumab Plus Bevacizumab and Chemotherapy in Patients With EGFR- or ALK-Mutated Non-Small-Cell Lung Cancer (ATLAS, KCSG-LU19-04) *J Clin Oncol.* 2023 Oct 20;JCO2301891. Online ahead of print.

Rare Cancer Committee

KCSG UN14-13 • PMID: 37741071

A phase II study on the efficacy of regorafenib in treating patients with c-KIT-mutated metastatic malignant melanoma that progressed after previous treatment (KCSG-UN-14-13) *Eur J Cancer.* 2023 Nov;193:113312.

KCSG UN18-05

Imatinib in c-KIT-mutated metastatic solid tumors: A multicenter trial of Korean Cancer Study Group (UN18-05 Trial) *Journal of Cancer Research and Therapeutics.* April 04, 2023

KCSG RC20-09 • PMID: 37264748

Treatment outcomes of advanced/metastatic extramammary Paget's disease in Korean patients: KCSG-RC20-06. *Cancer Med.* 2023 Jun 1. Online ahead of print.